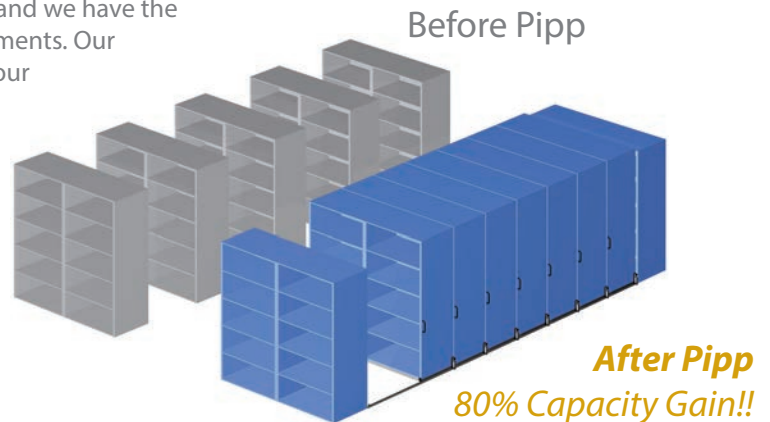


## Overview

**Pipp Mobile Storage System's Mission** has been to design space-saving systems that are responsive to customer-specific storage needs; to manufacture our systems to the highest quality standards; and to provide a level of sales and service support that is unsurpassed in the storage products industry. Our extensive product line allows us to tailor our systems for many different storage situations and we have the manufacturing capacity to handle high volume requirements. Our sole focus continues to be on developing ways to help our customers use their storage space wisely.

## Concept

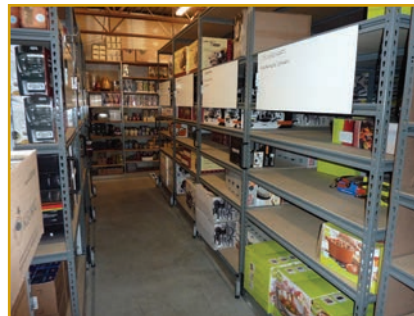
**Create more space** by compacting storage and eliminating fixed aisles. This, in turn, creates a single aisle system that increases storage capacity by as much as 80% (over traditional configuration).



## Retail Stockrooms - Application Opportunities



Apparel Storage (fold & hang)



Housewares & Appliances



Shoe Storage



Handbags & Accessories Storage



Bedding & Furnishings



Electronics & RTA Furniture

## Retail Stockrooms - Storage Solutions Options

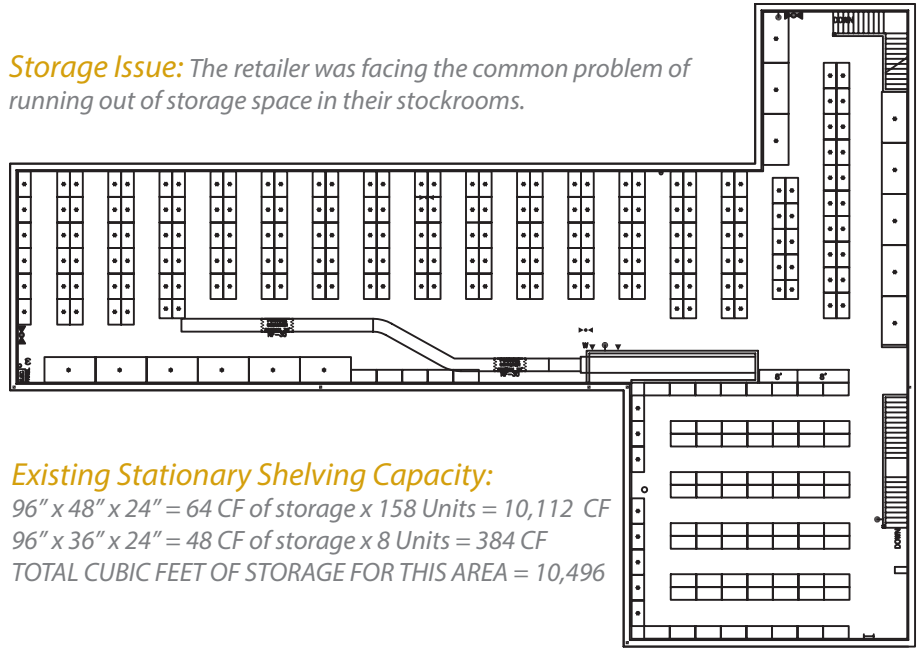
- ||||| **Mobile Shelving** attaches shelving units to mobile carriages creating a single aisle storage configuration
- ||||| **Stationary Shelving** installed along the perimeter walls of storage room
- ||||| **Perimeter Hardware** transforms empty wall space into additional storage space
- ||||| **Shelving and Stockroom Accessories** are available to truly optimize storage capacity

## Retail Stockroom Case Study

### Before Pipp...



**Storage Issue:** The retailer was facing the common problem of running out of storage space in their stockrooms.

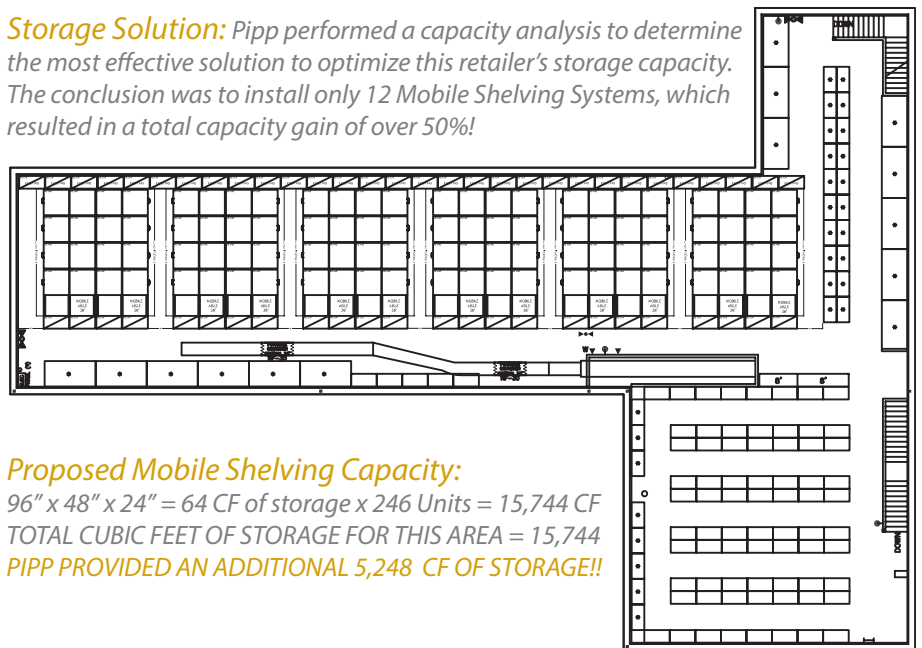


**Existing Stationary Shelving Capacity:**  
 $96" \times 48" \times 24" = 64 \text{ CF of storage} \times 158 \text{ Units} = 10,112 \text{ CF}$   
 $96" \times 36" \times 24" = 48 \text{ CF of storage} \times 8 \text{ Units} = 384 \text{ CF}$   
**TOTAL CUBIC FEET OF STORAGE FOR THIS AREA = 10,496**

### After Pipp... over 50% Capacity Gain!!!



**Storage Solution:** Pipp performed a capacity analysis to determine the most effective solution to optimize this retailer's storage capacity. The conclusion was to install only 12 Mobile Shelving Systems, which resulted in a total capacity gain of over 50%!



**Proposed Mobile Shelving Capacity:**  
 $96" \times 48" \times 24" = 64 \text{ CF of storage} \times 246 \text{ Units} = 15,744 \text{ CF}$   
**TOTAL CUBIC FEET OF STORAGE FOR THIS AREA = 15,744**  
**PIPP PROVIDED AN ADDITIONAL 5,248 CF OF STORAGE!!**