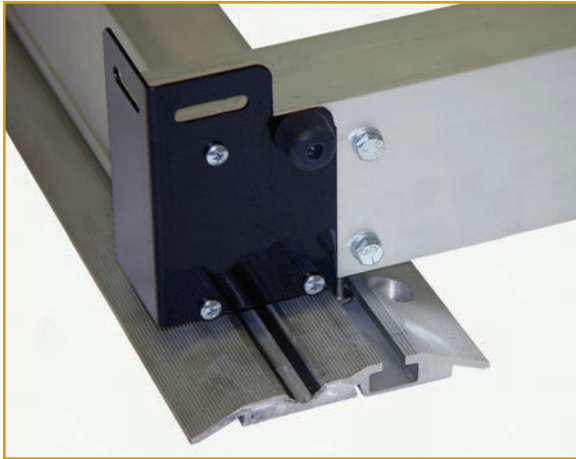


Anti-Tip Safety Features



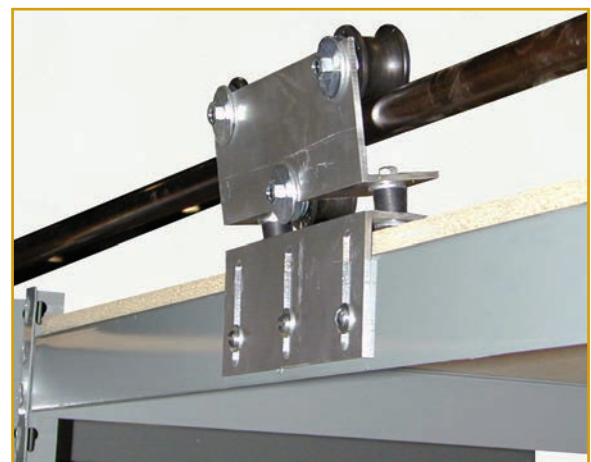
In-Track Anti-Tip (ITAT) Track is 5.34" wide, .5" at its highest point, and is made from heat treated aluminum. There is no adjustability within the track for this style. The ITAT Track is specifically to be used with our carriages with the Anti-Tip Tab. The track has a slot in it where the Anti-Tip Tab is located. This track must be used in conjunction with the heavy-duty track. This track can be used with the Standard Manual Carriage, Heavy Duty Manual Carriage or the Mechanical-Assist Carriage (up to 12' in length). In-Track Anti-tip is also available with both the standard and heavy duty Flat Track Systems. The ITAT track is available ADA compliant upon request.



EZ-Track Anti-Tip consists of an EZ-Trak base with an EZ-Trak carriage anti-tip arm which prevents shelving from tipping. The EZ-Trak anti-tip arm is free to travel in the EZ-Trak base as the carriage is moved along the track. If the carriage begins to tip, the arm immediately engages the base rail. Installed, the EZ-Trak base is secured by being positioned directly under the rear stationary storage units and mobile storage unit secured to the carriage by attaching the unit to the carriage corner plates using supplied attaching screws. Not recommended for units exceeding 88-1/4" in height.

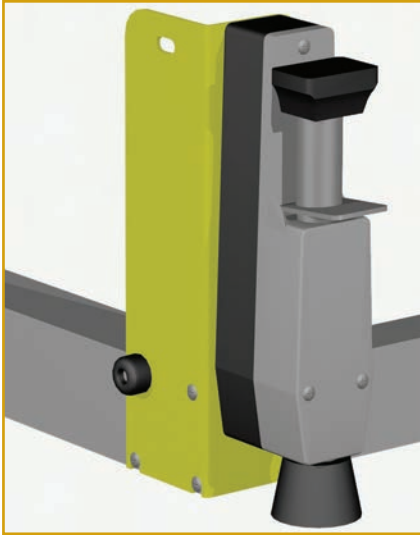


"Z" Rail Anti-Tip includes two anti-tip brackets which are mounted on the carriage wheel channel. As the carriage moves back and forth, these brackets slide in the open portion of the floor mounted "Z" Rail. The "Z" Rail stands upright 1" and is not ADA compliant. The "Z" Rail anti-tip option is compatible with all Pipp carriage families.



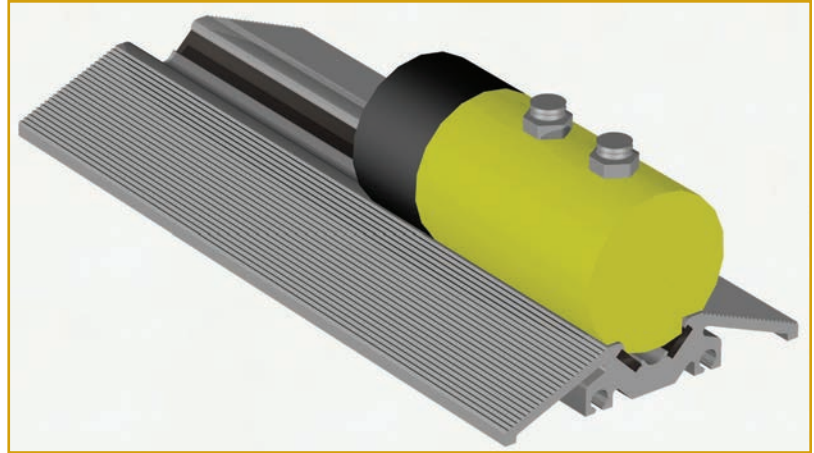
Overhead Anti-Tip (OHAT) includes a flexible mounting bracket and a roller guide to secure mobile systems overhead. The OHAT eliminates additional floor track by attaching to the top of the shelving instead of to the carriage base. Additionally, Overhead Anti-Tip flexes vertically to allow freedom of movement on irregular floors. The triple roller bracket provides an ease of movement while securing the carriages against tipping.

Accessory Safety Features



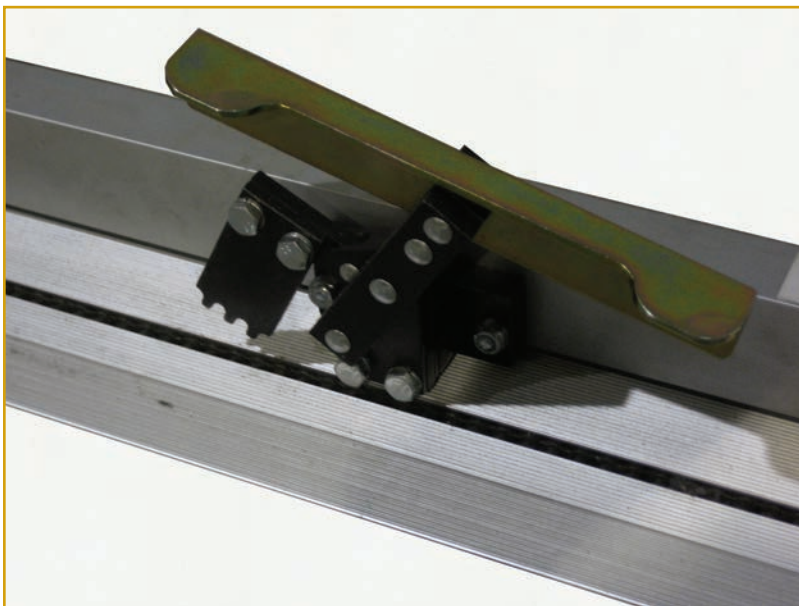
Safety Yellow Anti-Drift Mechanism

Prevents carriages from drifting.



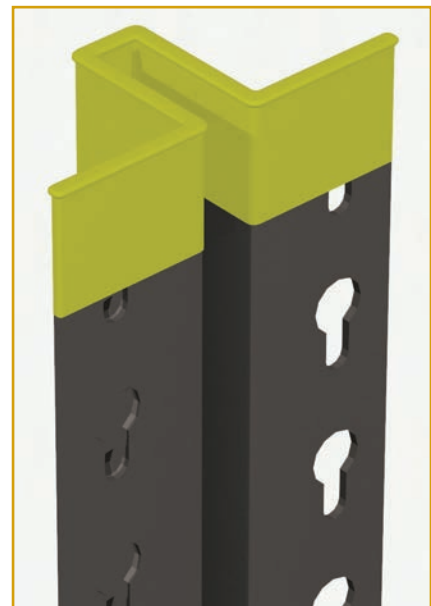
Safety Yellow End Stop

Calls your attention to the floor mounted end stop.



Posi-Lock Track System

Allows for positive locking of the carriages to prevent any movement.



Safety Yellow Upright Cap

Securely fasten to the top of the rivet style shelving. The caps are designed with a unique lock tab making them almost impossible to remove. Patent Pending.